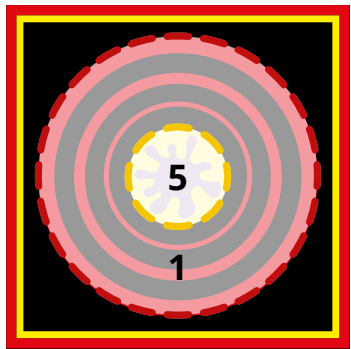
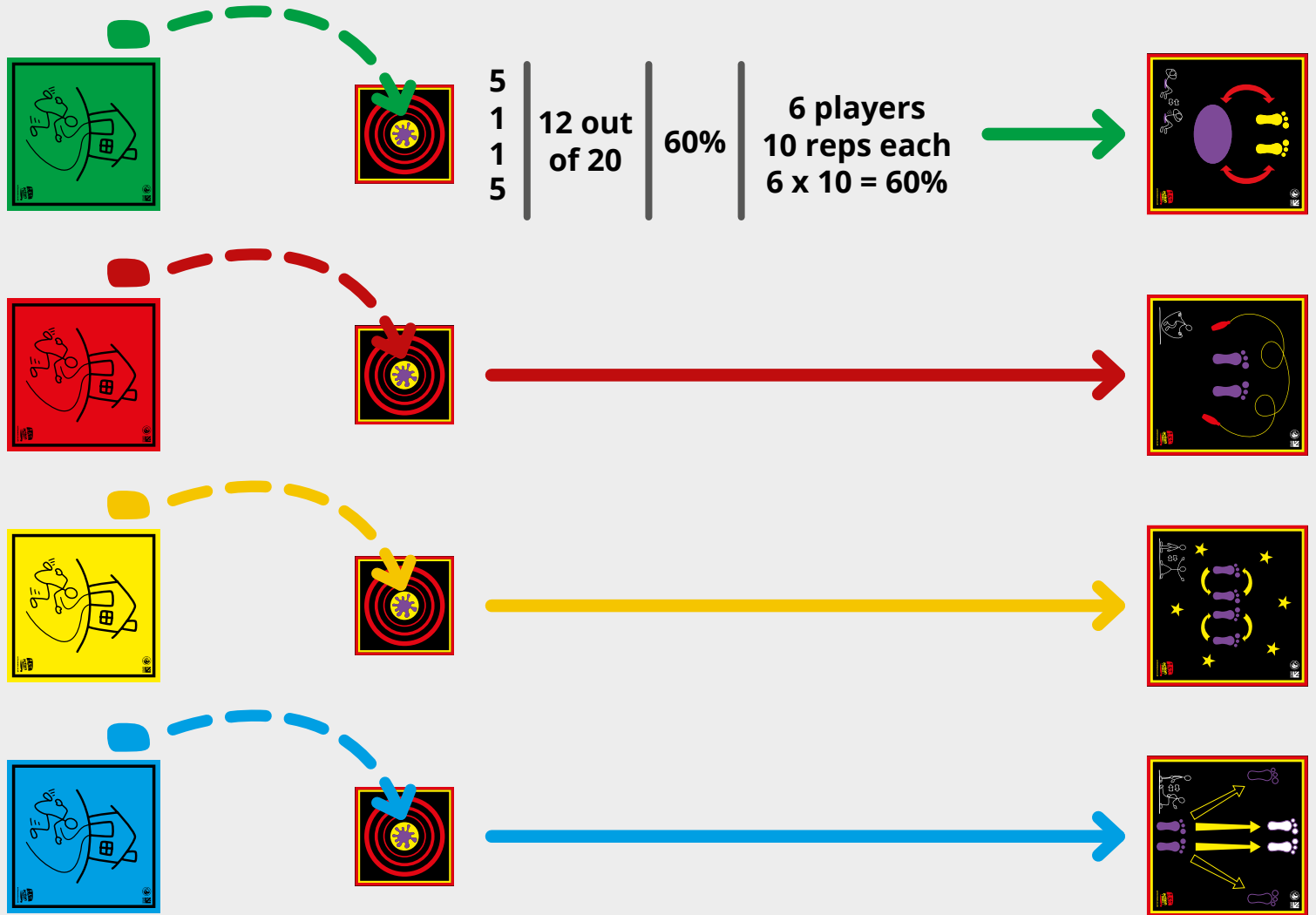
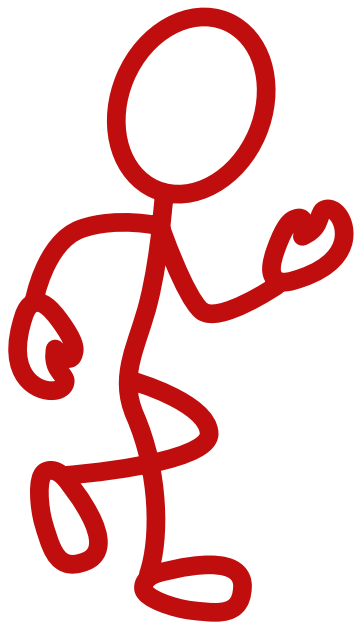




Percentage Pandemonium



0





Year

6

Focus

Percentages

What's needed

Home mats

Action Mats required:

Action Mats, Target Mats

Maths mats required:

Single and double digit mats

Warm Up

Target Challenge

Students should be split into four even teams and each team should be allocated a Home Mat. In front of each Home Mat should be a Target Mat (approximately 5m distance between the Target Mat and Home Mat). One each Home Mat should be 4 beanbags.

The students should take it in turns to throw all four of their beanbags towards their Target Mat and work out the percentage of beanbags that land on their Target Mat. After all students in each team has had a go the winner stays put on their Home Mat whilst the rest of the team have to run to an Action Mat and perform 10 repetitions of the activity on the mat before returning to their Home Mat. The activity is repeated four or five times and should be followed by some stretching.

Main task

Percentage Pandemonium

Students should remain in the groups they were in for the warm up activity. All team members stand behind the Home Mat apart from the person who is first in the queue who stands on the Home Mat. Next to the Home Mat should be a number of beanbags (4-6 per team would be ideal)

The first person throws their beanbags onto the target mat and adds up the score for all of their thrown beanbags (five points for hitting the middle of the target and one point for hitting any other section of the target). Once they have done this they try to work out the percentage they have scored with their throws. For example, if you use 4 beanbags the maximum score possible would be 20 points. If the student scores 12 in total with their thrown beanbags their score is 60% of the total possible.

Once the student has worked out their percentage all the team members must run to one of the action mats. They must then work out how many repetitions of the activity they should each perform based on the percentage score of the thrower. In the above example, if the thrower scored 60% and there are six students in the team each student must perform 10 repetitions of the task ($6 \times 10 = 60\%$)

The second person then repeats the task, as does the third, fourth, fifth etc.

To make the activity more challenging add more beanbags and / or increase the distance between the Home Mat and the Target Mat.