



Sale!

Year

5

Focus

Percentages of an amount

What's needed

x4 Home Mats

Action Mats required:

As many as needed

Maths mats required:

All Maths Mats are needed

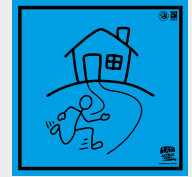
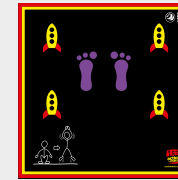


£100 with a  
5% discount =

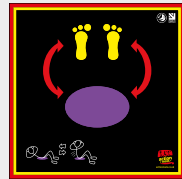
£54



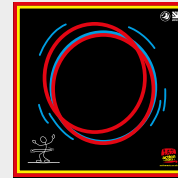
£90



10% off  
£60 =



£9



£95

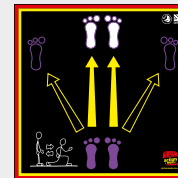


£20

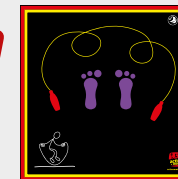
60% of £20 =



£75



£35



£12

40% of £50 =





## Warm Up

### Percentage Relay

Have students stand in groups around an action mat. Call out a percentage problem (eg, 50% of 20, 10 % of 50, 25% of 60) students each need to carry out this number of the given activity. When the whole group has done this, they sit down. A point to the first group finished.



Make the problems gradually more difficult by adding in less

## Main task

### Sale!

Have eight action mats spread around the room, next to each action mat have a piece of A4 paper, labelled as follows: £20, £40, £54, £60, £95, £12, £32, £34

Have the home mats spread around the room with the following questions face down next to them: What is 60% of £20? What is 40% of £50? What is 85% of £40? How much would a phone that cost £100 with a 5% discount? What is 80% off £40? If a top cost £50, what is it now with 20% off? What is 10% off £60? A pair of shoes cost £80 but there is a 25% discount, what does it cost now?

The group form a circle around their home mat. When instructed they turn over the question paper. They then need to find the action mat with the correct answer and every member of the group must carry out 10 actions on the mat before returning to their original home mat.

Rotate the groups around the different home mats after each go.



This activity could be made more difficult by using questions that contain the inverse problem. Eg, you pay £30 for a jumper in a sale; it had been reduced by 50%, what was the original price?